



The new degree of comfort.®

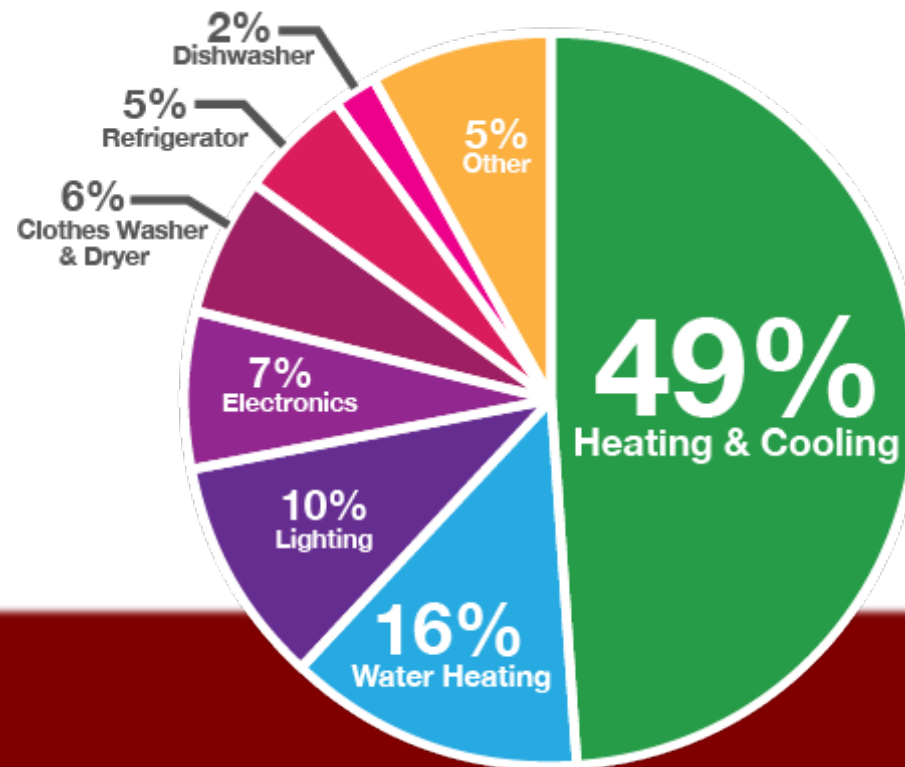




## The Rheem Difference

Rheem is the only company who can help a homeowner control 65% of their home's energy usage.

Water Heating is The  
**2<sup>nd</sup> Highest**  
Energy User In The House



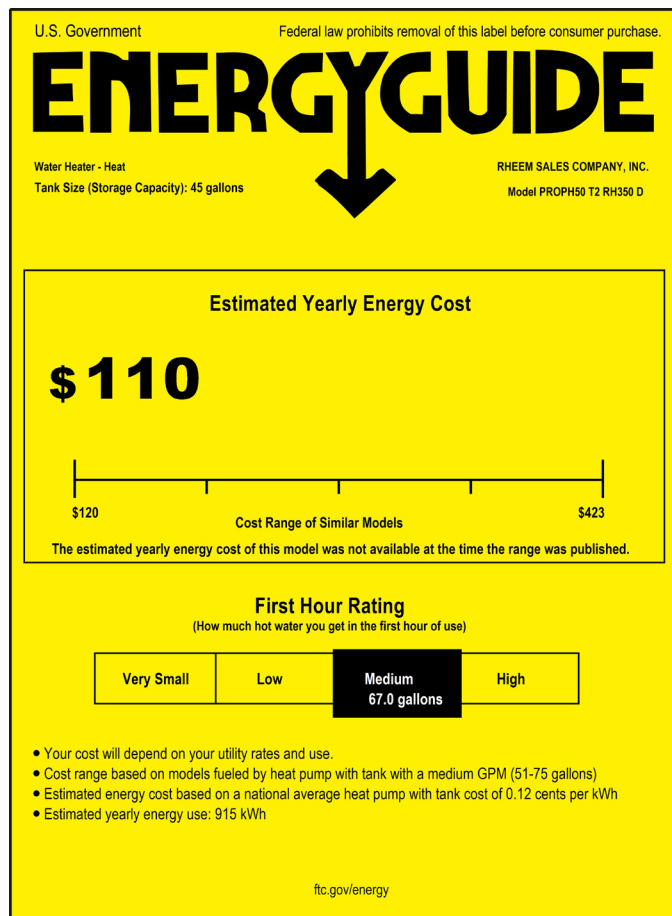
*Prestige*<sup>®</sup> Series Hybrid Electric Water Heater



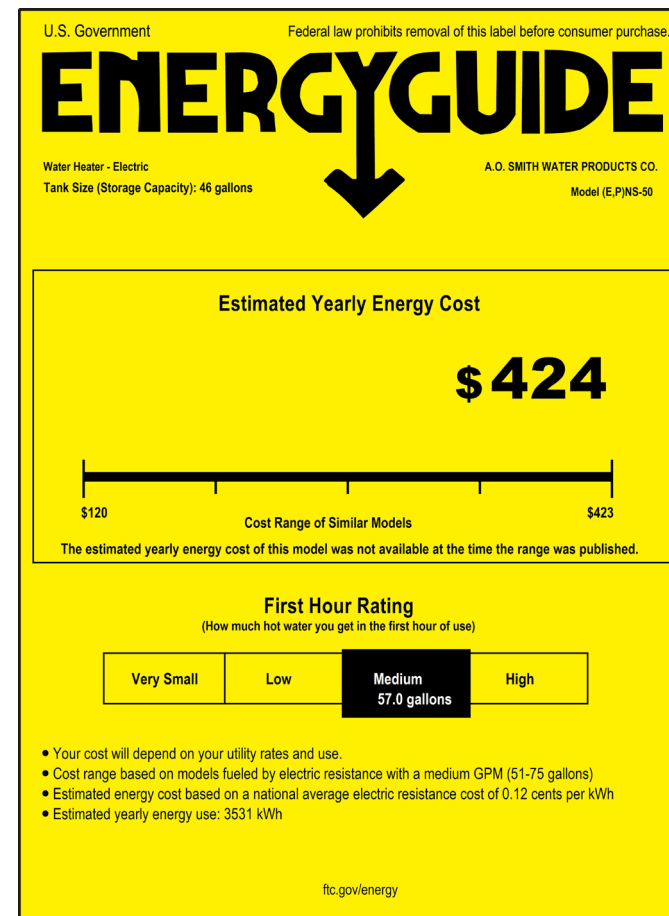


# Over 70% Reduction In Energy Usage

915 kWh per Year

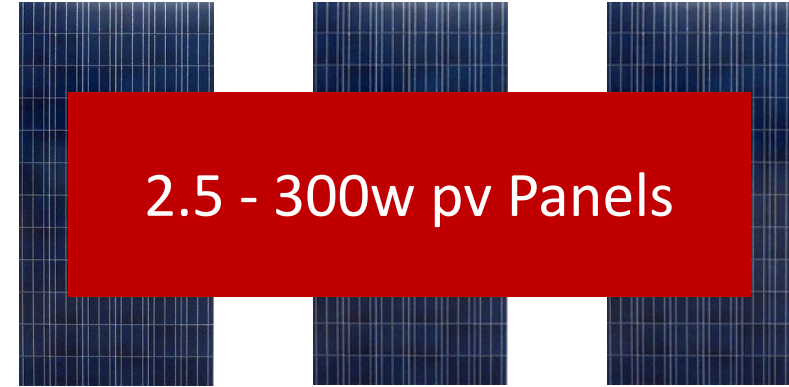


3,531 kWh per Year



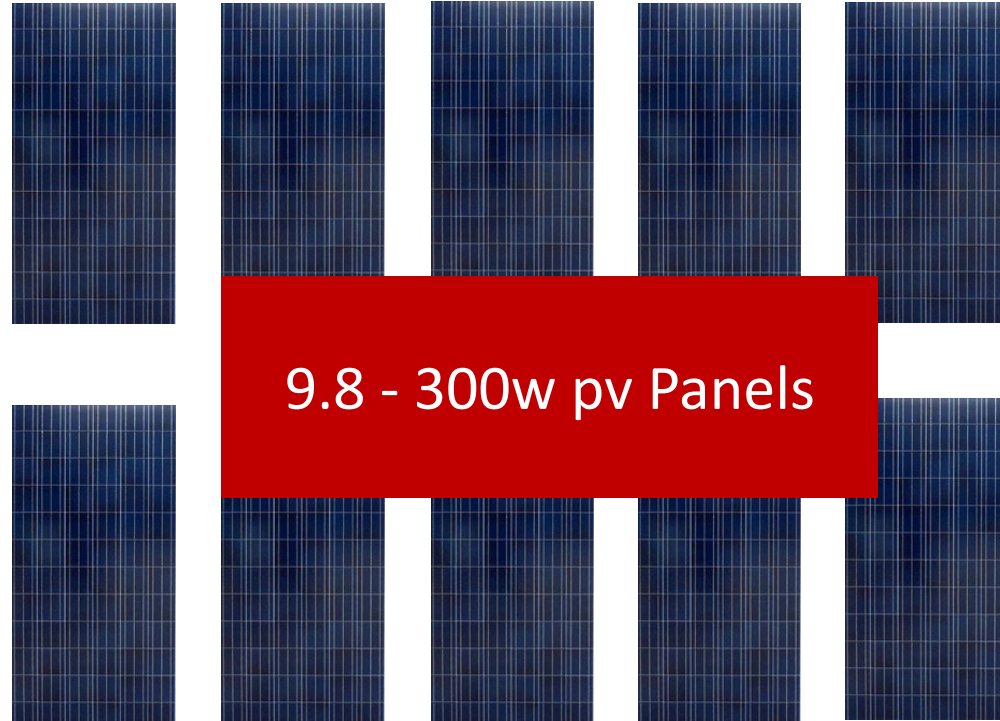


## Value Proposition With Solar



2.5 - 300w pv Panels

Standard  
Electric Water  
Heater



9.8 - 300w pv Panels



# Environmental Considerations



## Equivalency Results [How are they calculated?](#)

The sum of the greenhouse gas emissions you entered above is of Carbon Dioxide Equivalent. This is equivalent to:

1.9 Metric Tons

### Greenhouse gas emissions from

0.417

Passenger vehicles driven for one year

-or-

4,772

Miles driven by an average passenger vehicle

-or-

0.678

Tons of waste recycled instead of landfilled

-or-

0.097

Garbage trucks of waste recycled instead of landfilled

### CO<sub>2</sub> emissions from

219

gallons of gasoline consumed

-or-

2,130

Pounds of coal burned

-or-

0.026

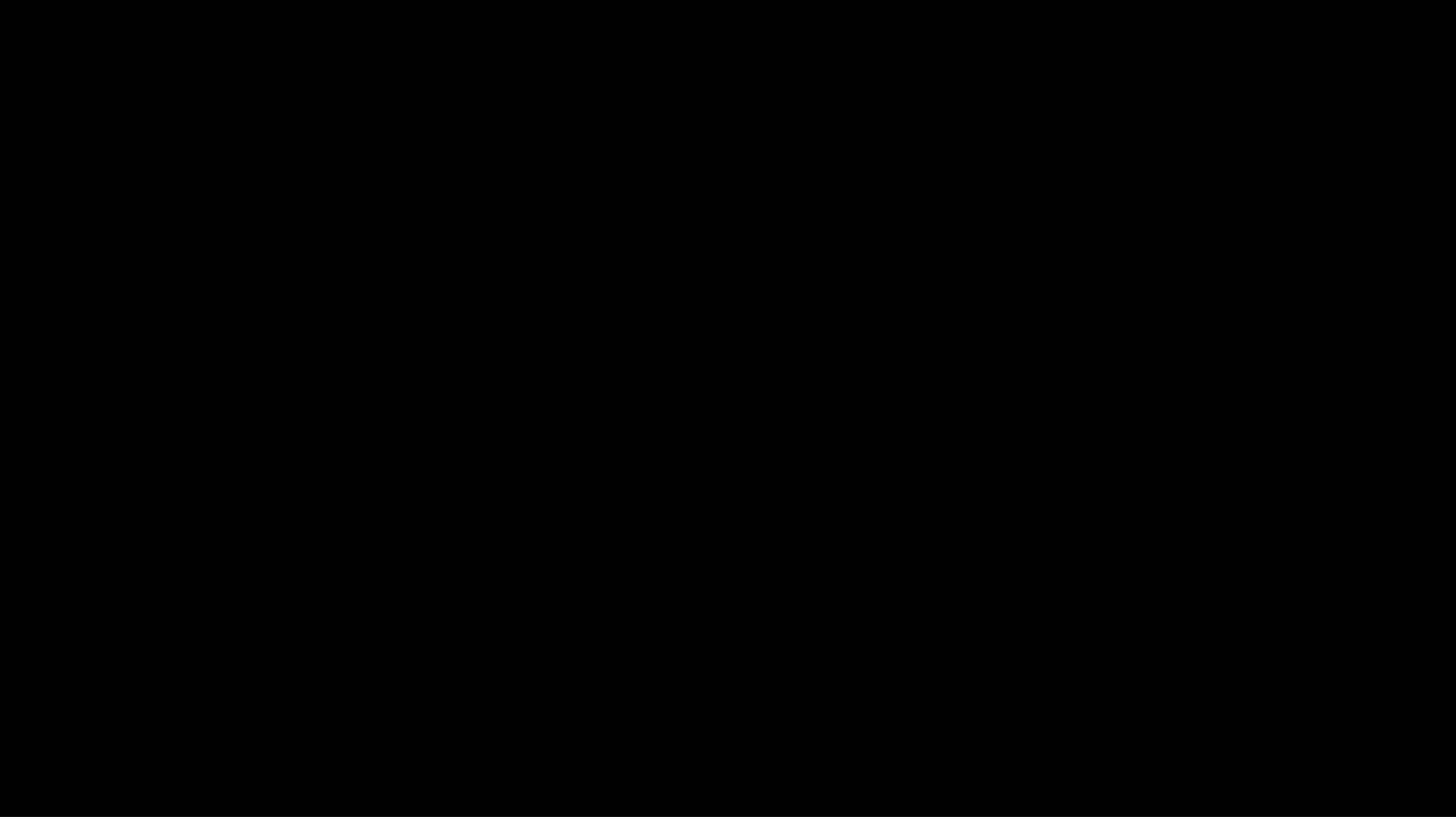
tanker trucks' worth of gasoline

-or-

0.21

homes' energy use for one year

-or-





# Thoughtful Design



## Efficiency

- Compressor uses 300-500W but delivers 1700W to the water

## Smartest

- 5000W heating elements
- Makes More Hot Water Than Standard Electric Heaters
- LeakSense
  - Protects your home
  - Audible Alert from unit
  - Alerts via EcoNet® App

## Quietest

- QUIETEST IN ITS CLASS !
- Can be installed in the living space. As quiet as a dishwasher or refrigerator





# There's an APP for That

## Built-In Integrated Wi-Fi

NEW

Wi-Fi to receive alerts and alarms with no additional cost



## On screen Wi-Fi Set up

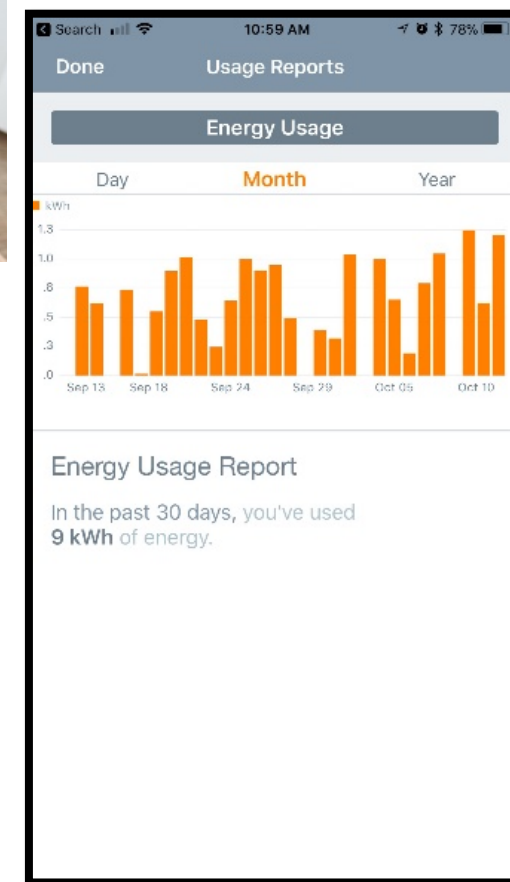
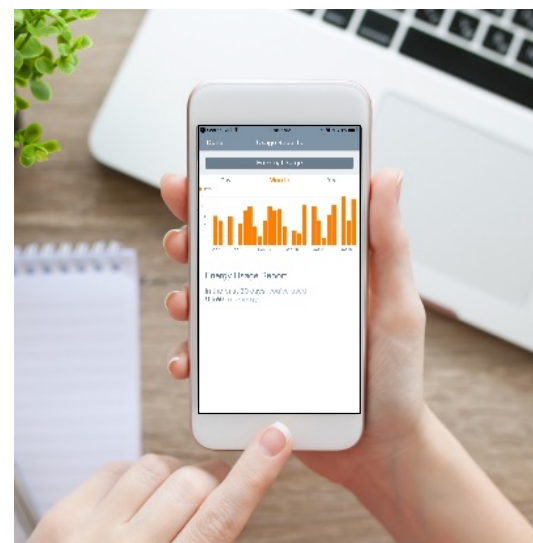
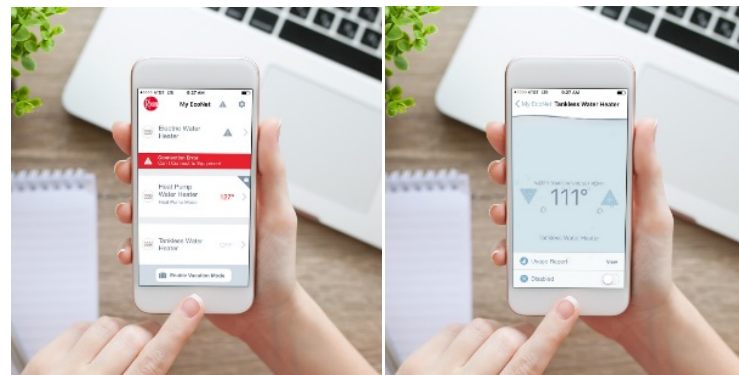
NEW

Simplifies Wi-Fi set up for the plumber or homeowner

## Energy Usage Reports

NEW

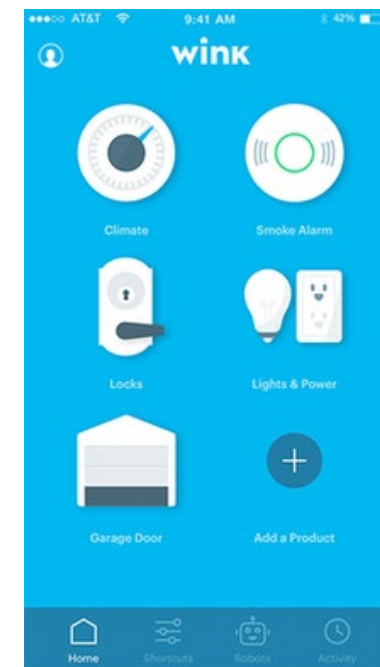
Provides real time information on energy use







Works With



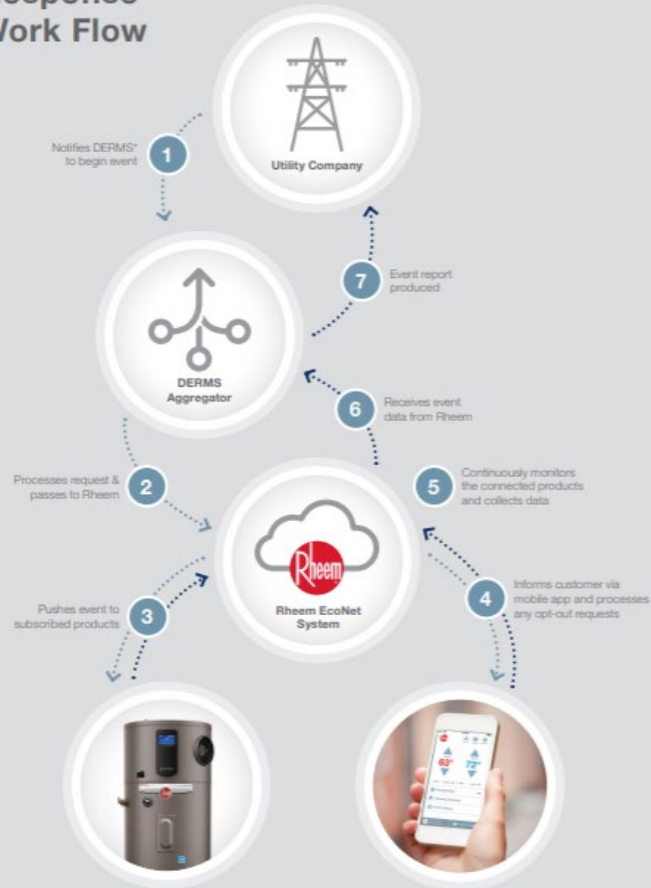
Your Google Assistant,  
always ready to help





# Forging Partnerships for Better Grid Management

## Demand Response Work Flow



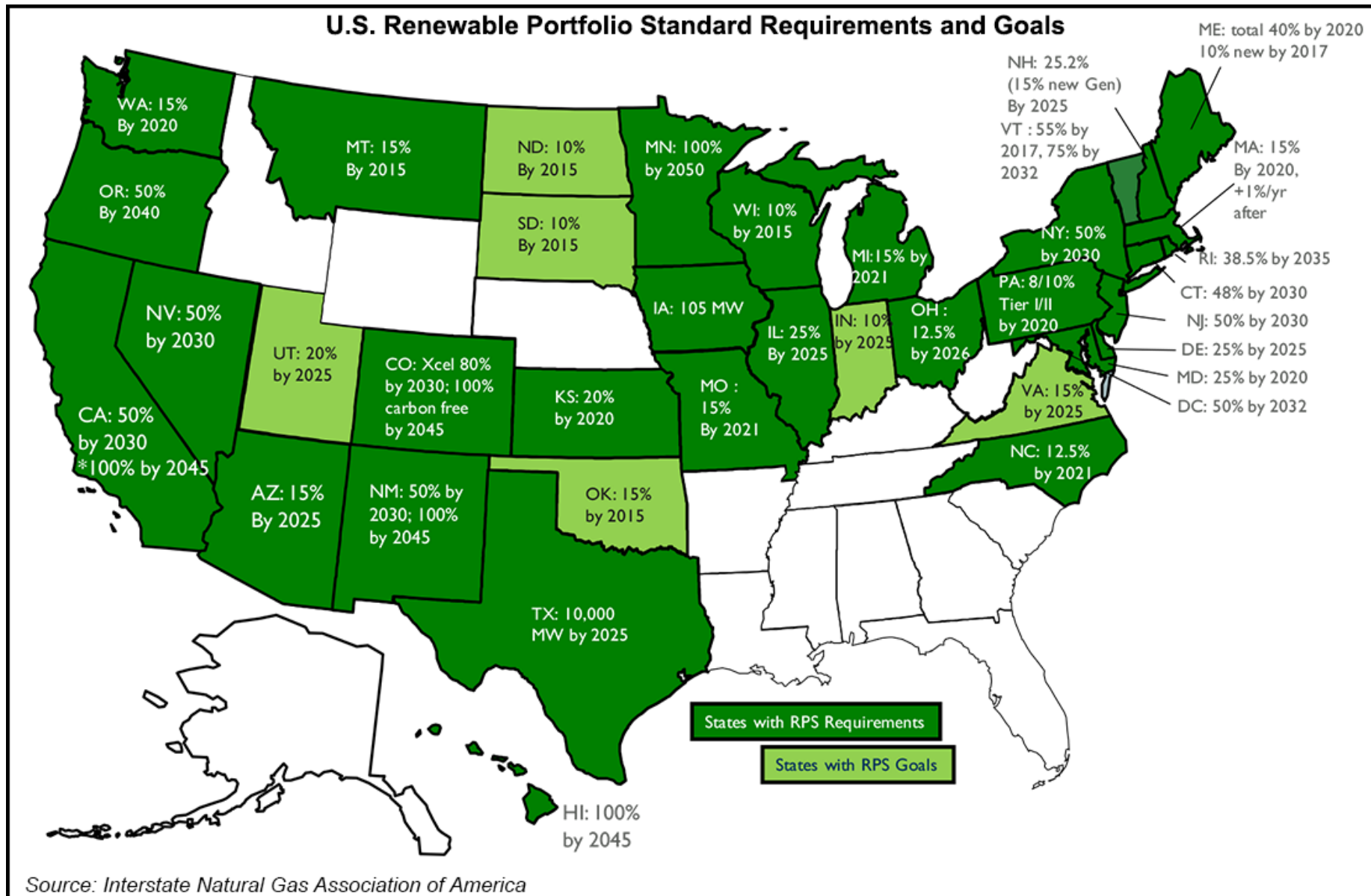
The new degree of comfort\*

To learn more contact: [DemandResponse@Rheem.com](mailto:DemandResponse@Rheem.com)





# Renewables Goals by State






# Home Energy Rating System (HERS)

Over 2,000,000 Homes in The U.S. Were RESNET HERS Rated!  
From 120,000 homes in 2011.

## WHAT IS THE HERS INDEX SCORE?

The HERS Index Score is the nationally recognized, energy efficiency version of a MPG (miles-per-gallon) sticker for homes. It tells you how a home rates for energy efficiency and its potential energy savings as compared to other similar homes.




-  Lets you compare homes by energy usage
-  A lower HERS Index Score signifies a more energy efficient home with lower energy costs
-  Energy efficient homes have reduced carbon dioxide emissions by 4 million tons which is equal to taking 766,000 cars off the road each year



## WHY GET A HERS INDEX SCORE?

Know if a home is energy efficient and how it compares to other similar homes

 **Improve home comfort and reduce energy bills**

- Drafty homes that are too cold in winter and too hot in summer suffer from high energy bills
- In 2016 homes with HERS Index scores generated energy savings of \$268 million

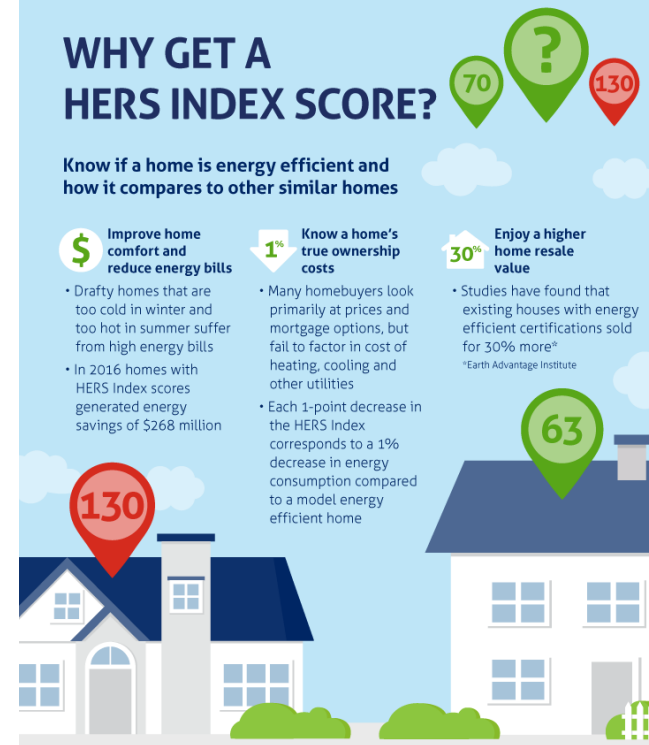
 **Know a home's true ownership costs**

- Many homebuyers look primarily at prices and mortgage options, but fail to factor in cost of heating, cooling and other utilities
- Each 1-point decrease in the HERS Index corresponds to a 1% decrease in energy consumption compared to a model energy efficient home

 **Enjoy a higher home resale value**

- Studies have found that existing houses with energy efficient certifications sold for 30% more\*

\*Earth Advantage Institute



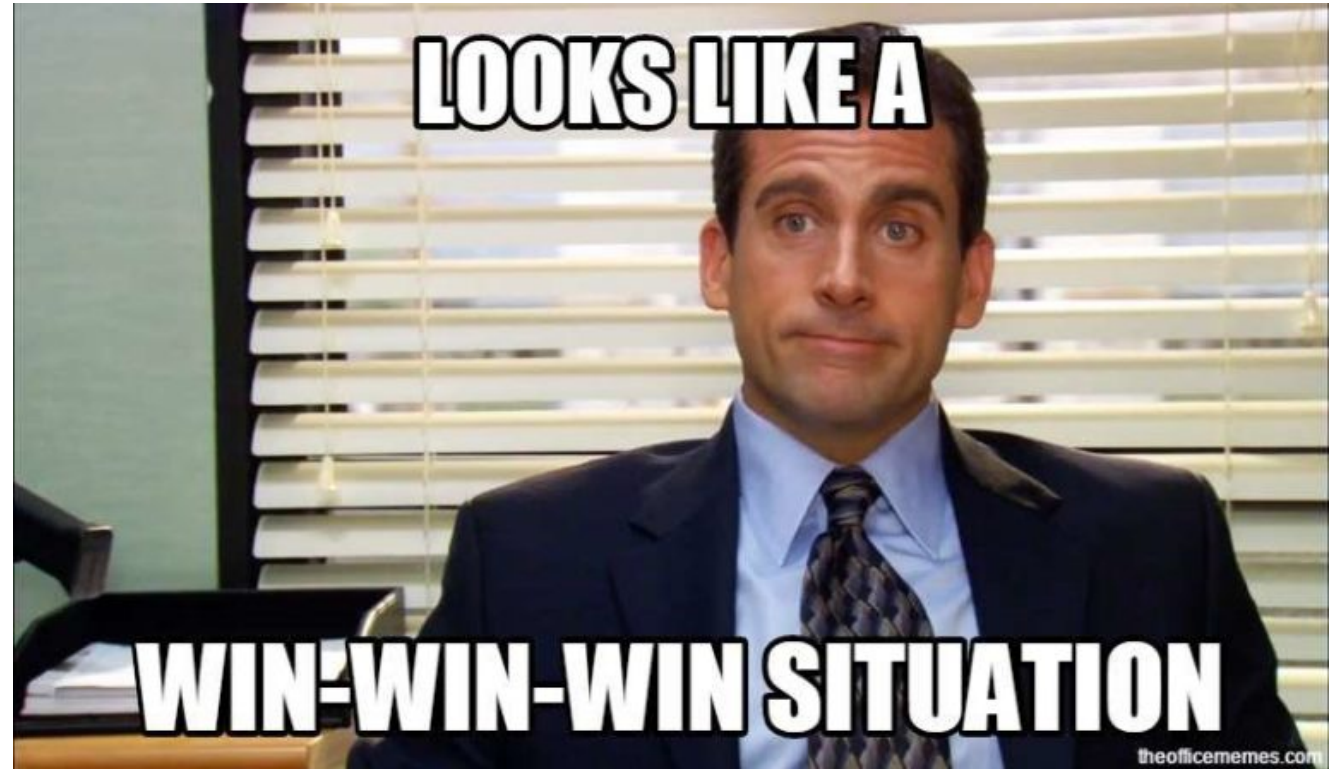
*Prestige*<sup>®</sup> Series Hybrid Electric Water Heater  
Saves 4-7 HERS Points!



## Recap/Questions?

### The Rheem Hybrid Wins:

- Highest Efficiency
- Quietest
- Install ability
- Connectivity
- Leak Detection
- Energy Savings Reports
- Included Ducting Connection
- Serviceability
- Recovery
- Available Models



Kevin Clark  
Region Sales Manager-Utilities  
[Kevin.Clark@Rheem.com](mailto:Kevin.Clark@Rheem.com)  
702-218-0194