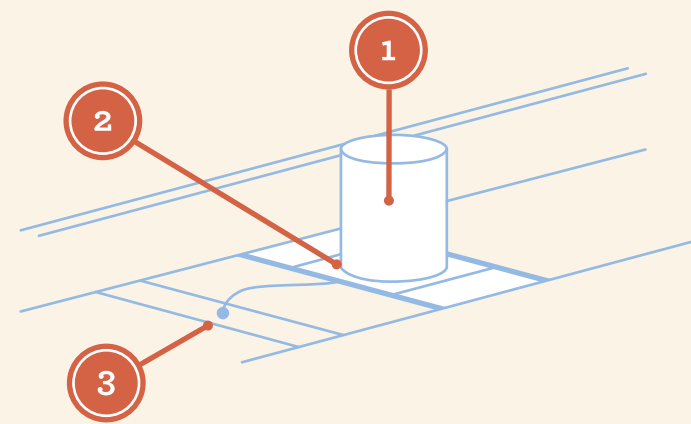
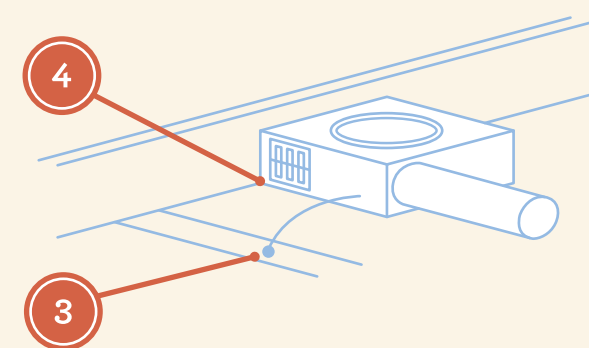


# THERMAL ENCLOSURE BEST PRACTICES

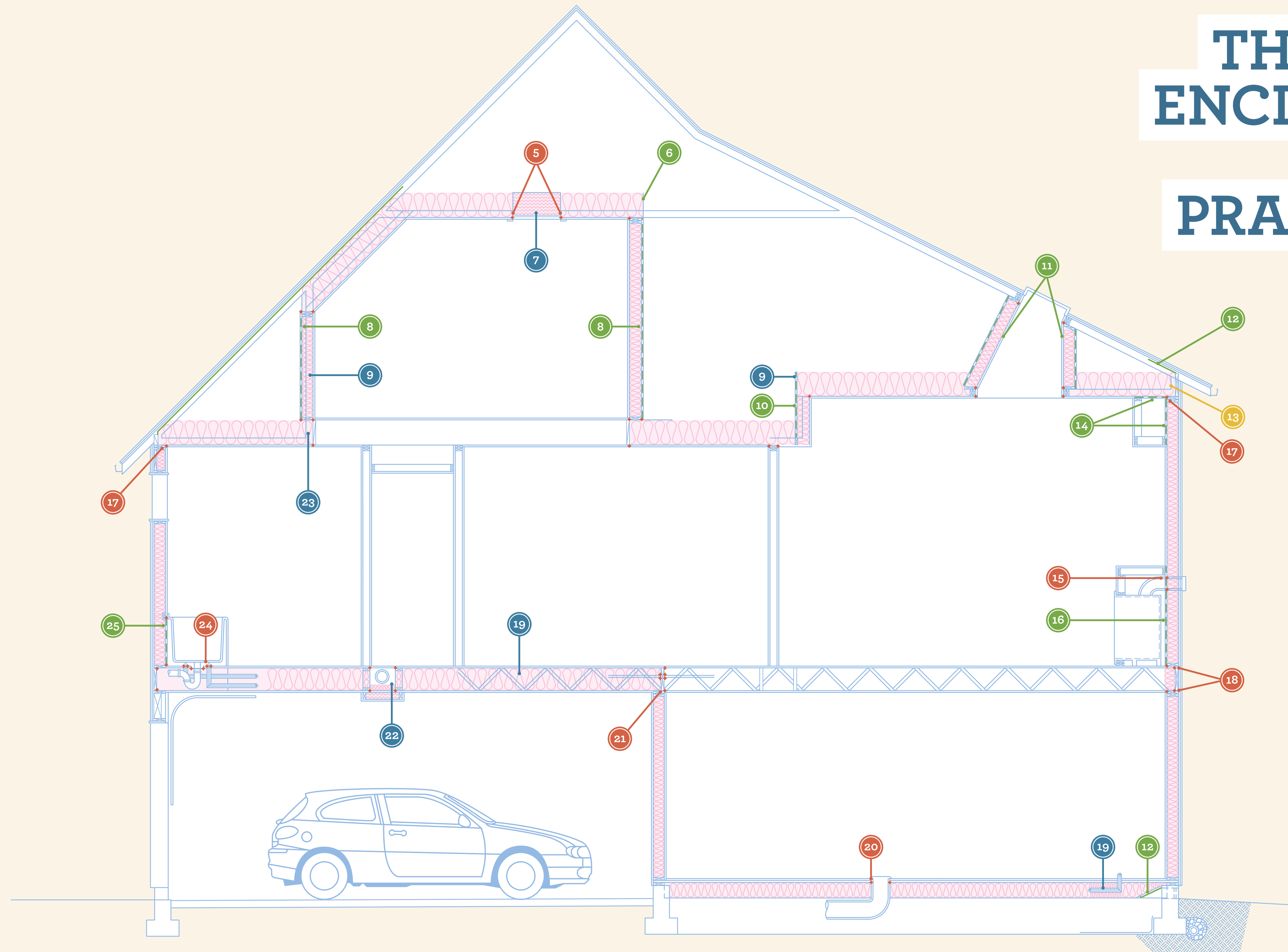
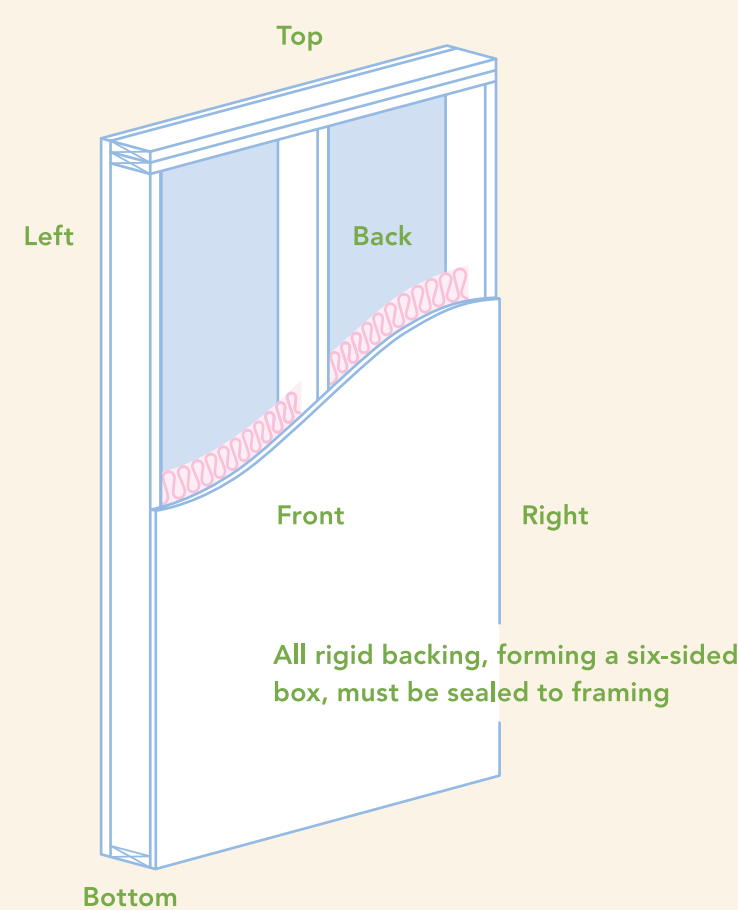
## Recessed Light Fixture



## Bathroom Ceiling Fan



## Six-Sided Assembly



### Air Sealing

- 1 Use insulation contact airtight, or ICAT, rated can light fixture with rubber gasket
- 2 Seal can light to drywall
- 3 Seal electrical penetrations
- 4 Seal bathroom ceiling fan to drywall
- 5 Weather-strip attic access
- 15 Seal flue shaft with fire caulk
- 17 Seal Sheetrock to top plates at all attic-to-wall intersections

- 18 Caulk rim or band joist to subfloor and plates
- 20 Seal duct boots to subfloor
- 21 Install a continuous rigid air barrier or other supporting material to separate the garage from the conditioned space, and then air seal
- 24 Air seal plumbing penetrations

### Air Sealing Points= ◆

### Quality Installed Insulation

- 7 Insulate attic access
- 9 Use of R-23 insulation and backing required (fur out as needed)\*
- 19 Make full contact with subfloor where insulation in floor cavities is detailed around plumbing and electrical
- 22 Provide full R-value of floor insulation under duct runs where ducts run over the garage
- 23 Block and air seal between attic and bonus room floor

### Fully Aligned Air Barriers

- 6 Install insulation dam as needed to maintain full height of ceiling insulation
- 8 Install rigid backing behind all knee walls\*
- 10 Install rigid backing at stepped ceiling\*
- 11 Install rigid backing on all skylight walls
- 12 Install baffles to prevent wind washing
- 14 Install rigid backing behind dropped soffit\*
- 16 Install rigid backing behind fireplace sealed to framing\*

- 25 Install rigid backing behind all tubs and showers\*

### Baffle= ———

\*Six-Sided Assembly= - - - -  
All rigid backing, forming a six-sided box, must be sealed to framing

### Reduced Thermal Bridging

- 13 Use R-21 at inside edge of top plate